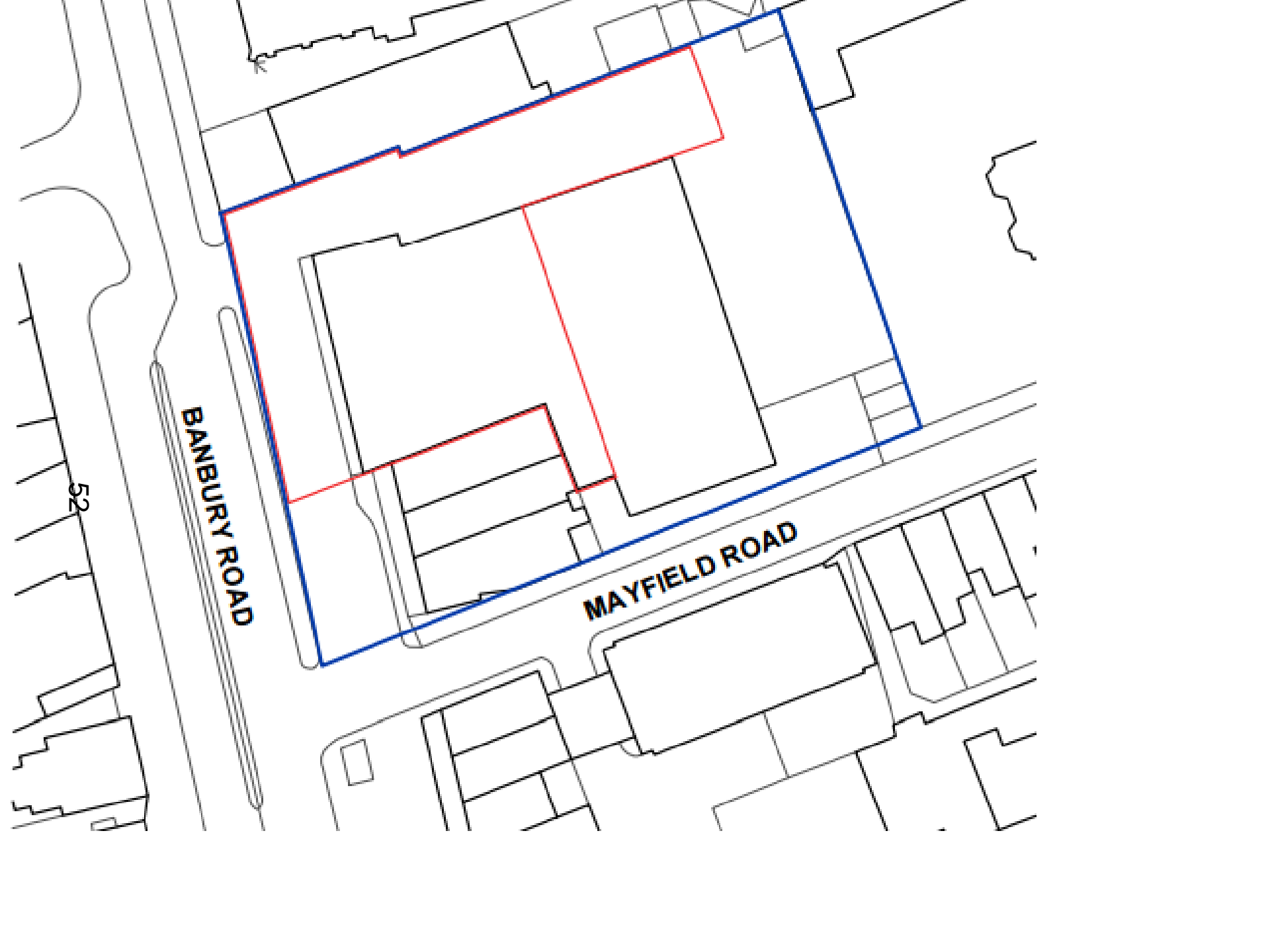


# Welcome to the West Area Planning Committee

- This planning committee meeting is held in public but it is not a public meeting.
- There will be an opportunity for the public to address the committee on each application.
- 51 • If you wish to speak for or against a planning application, you need to have either requested it in advance, or hand in one of the available speaker forms, or speak to the clerk.
- Information on meeting protocol and conduct at the committee is set out in the Code of Practice.
- This is in the committee agenda just before the first planning application report.

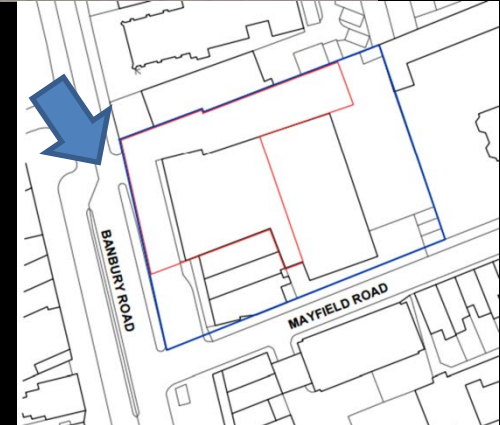


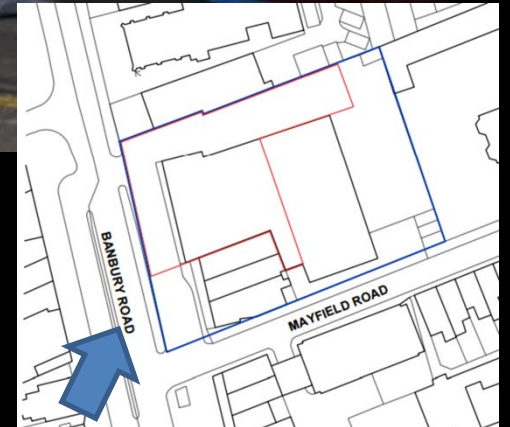
**BANBURY ROAD**

**MAYFIELD ROAD**

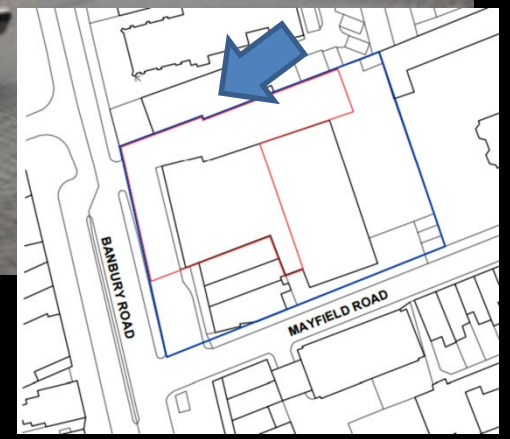
52

V  
S  
D  
R  
P  
T



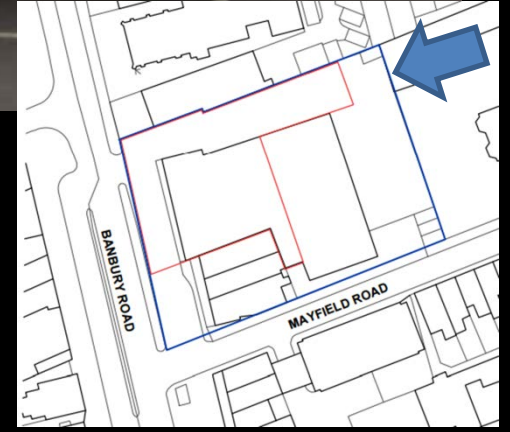


View from south-west  
corner of 'western  
square' looking north  
towards  
Bridge

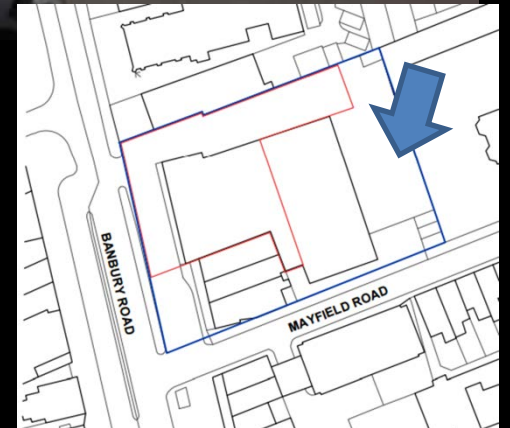




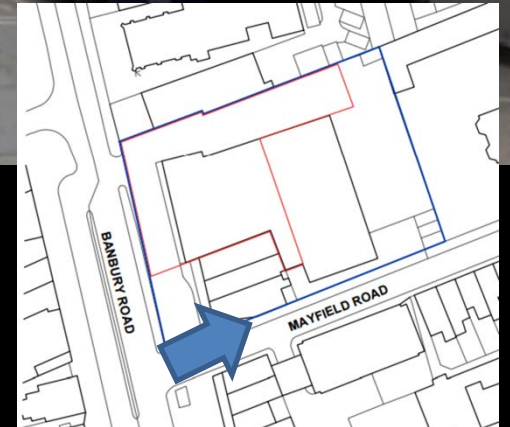
56



View from south-west corner of 'western square' looking north towards Donnington Bridge Road (properties on left are 35-46 Townsend Sq)



View from south-west corner of 'western square' looking across square towards the north-east (properties in distance are 1-12 Townsend Sq)

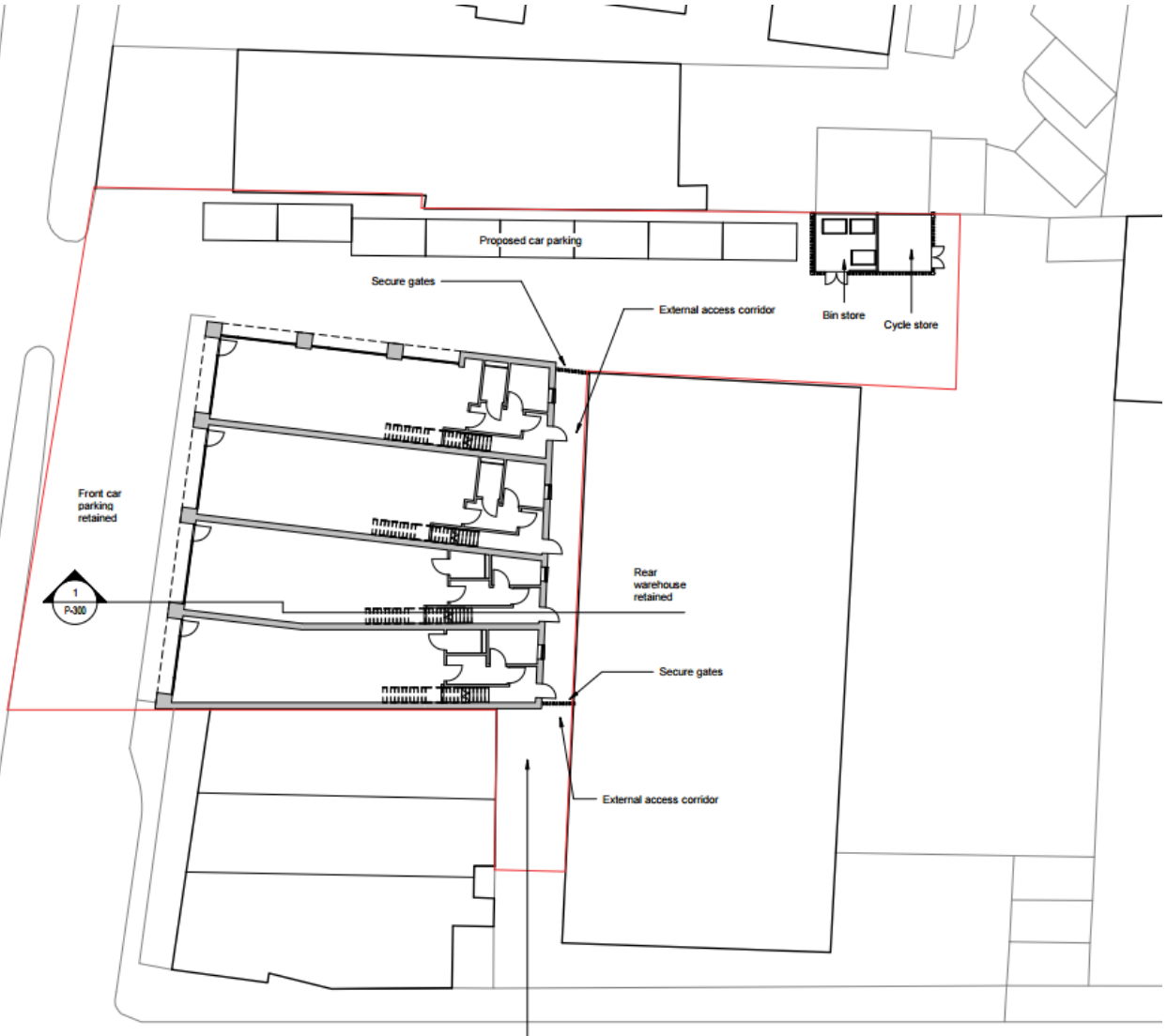


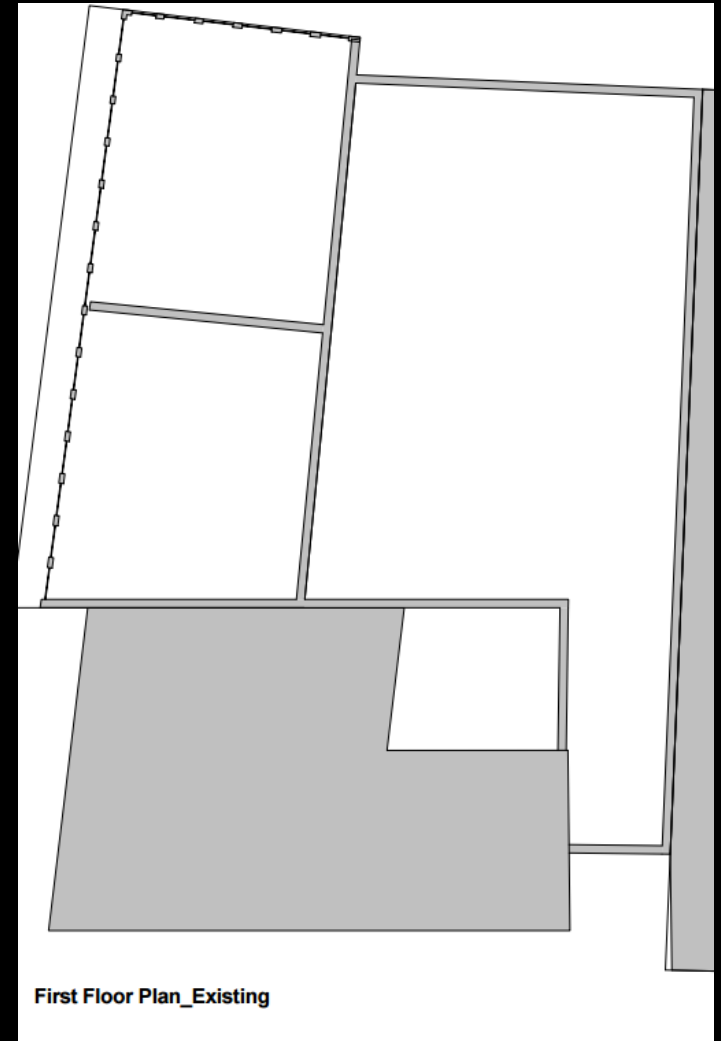
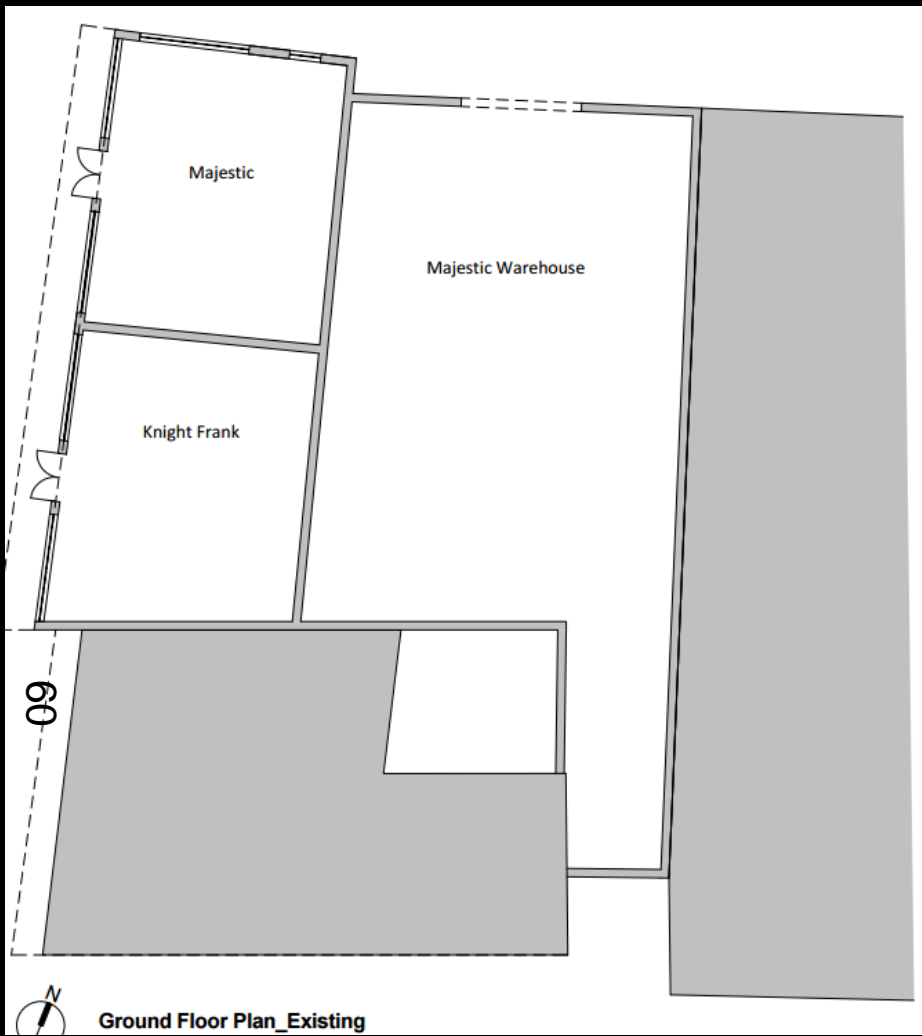
View from south-west corner of 'western square' looking east (properties on right are 23-34 Townsend Sq)

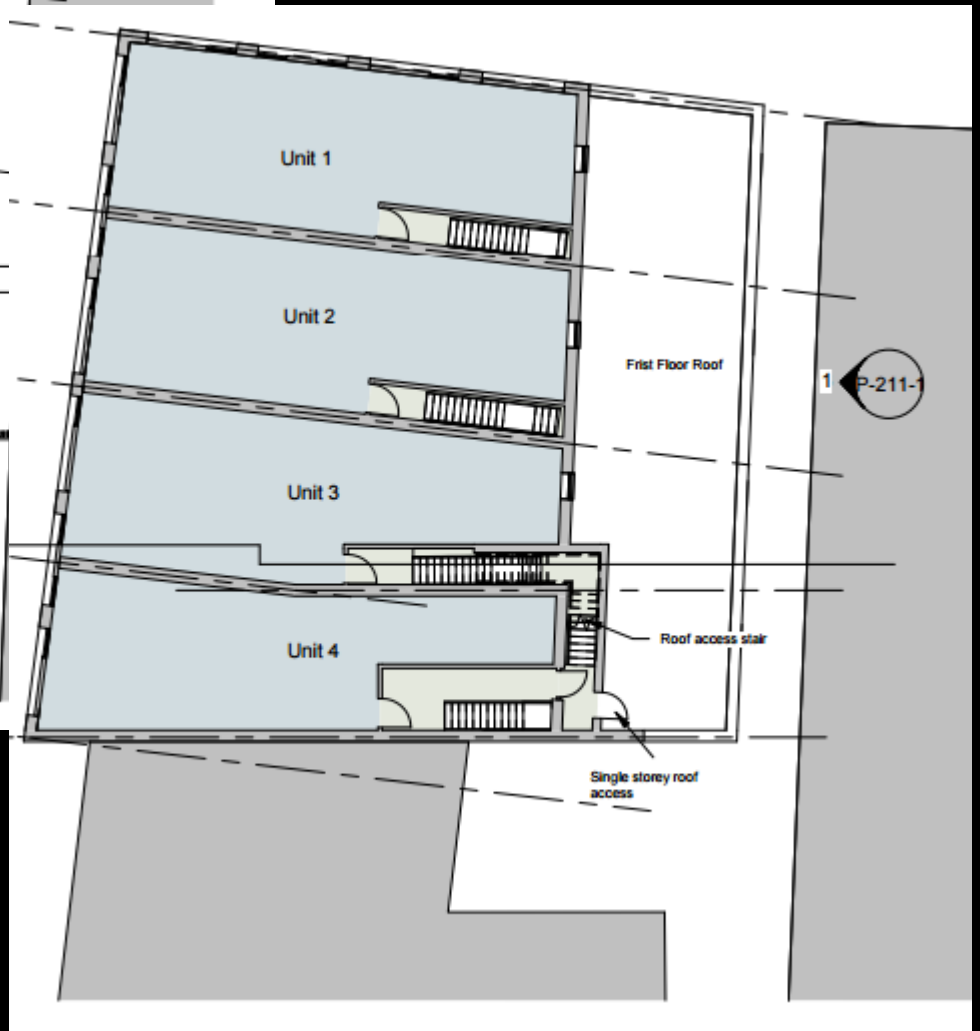


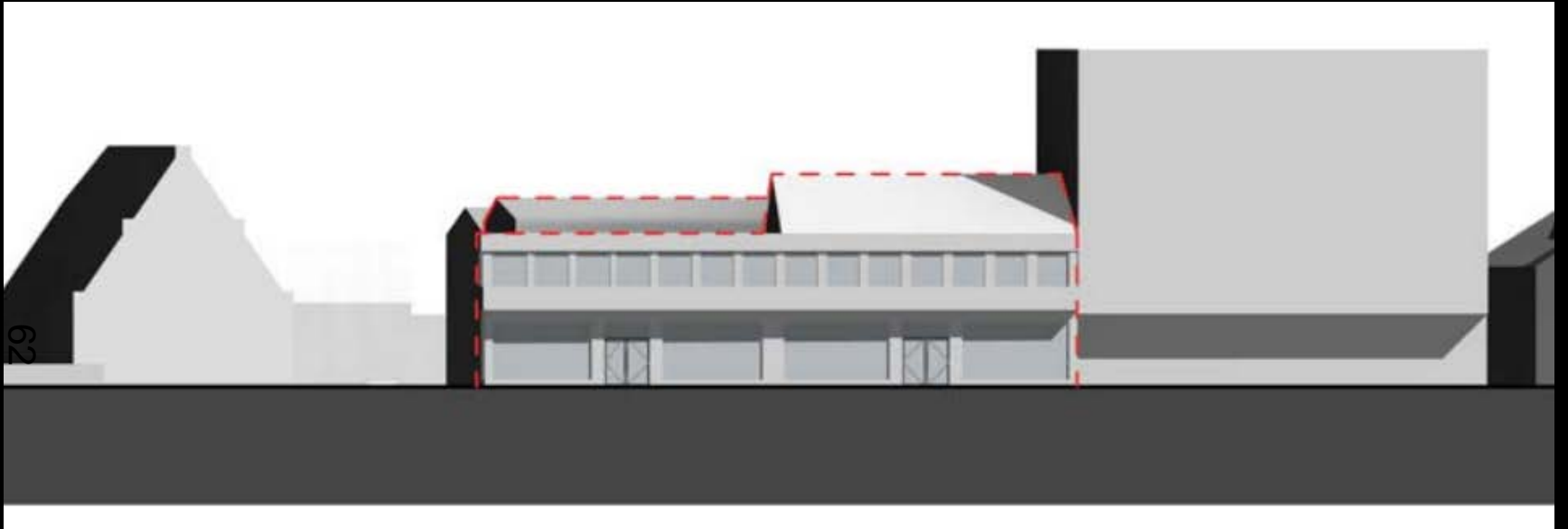
69

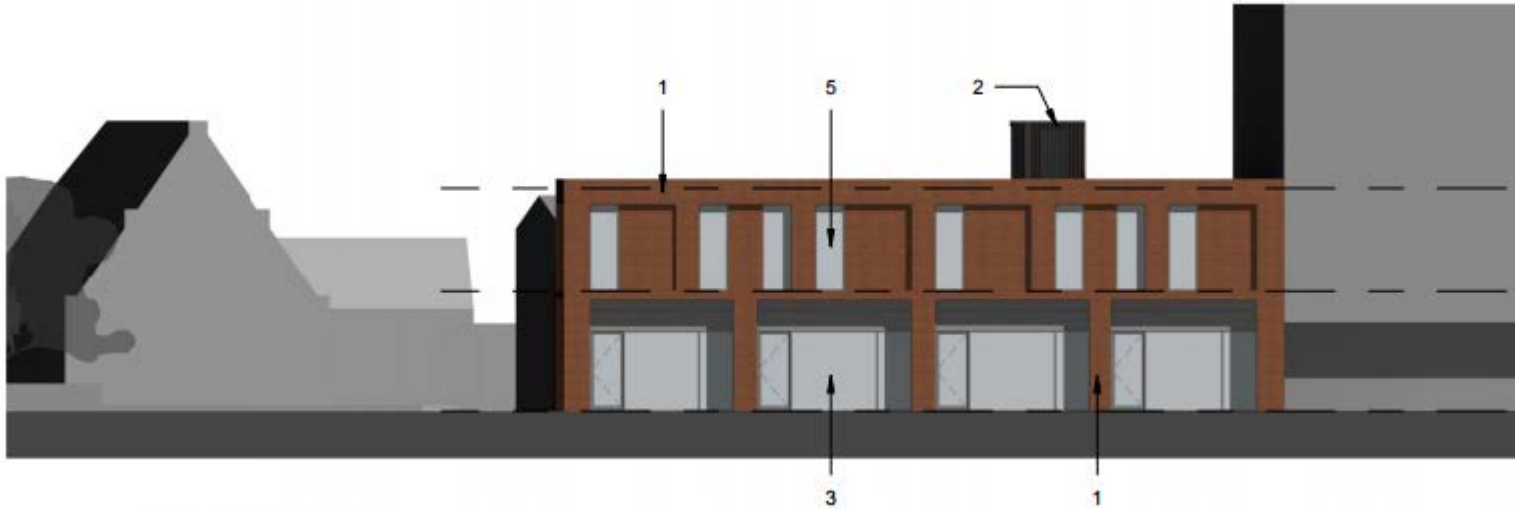
BANBURY ROAD







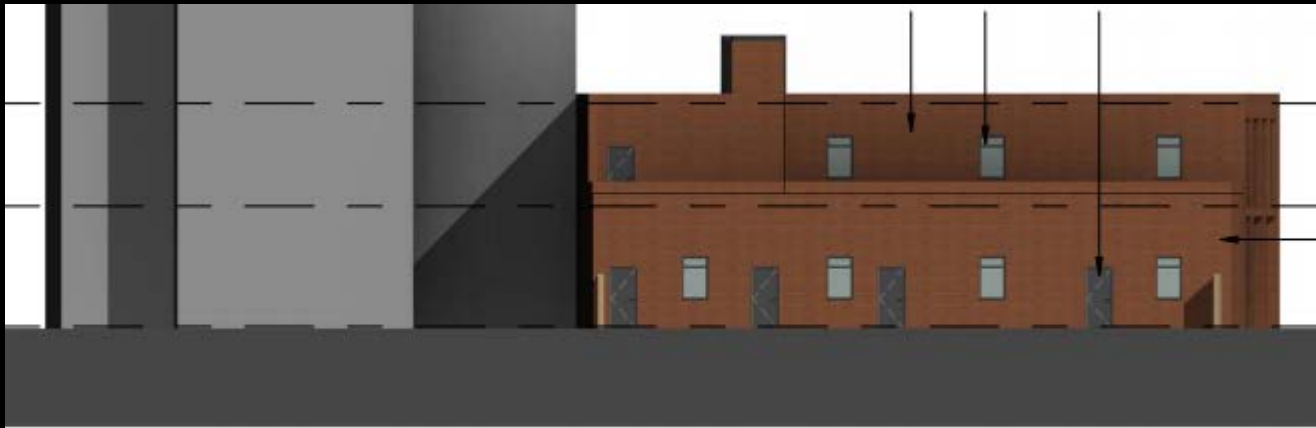




211-1\_West Elevation



211-1\_North Elevation



211-1\_East Elevation